

吉敷503寮

KISHIKI503 Dormitory



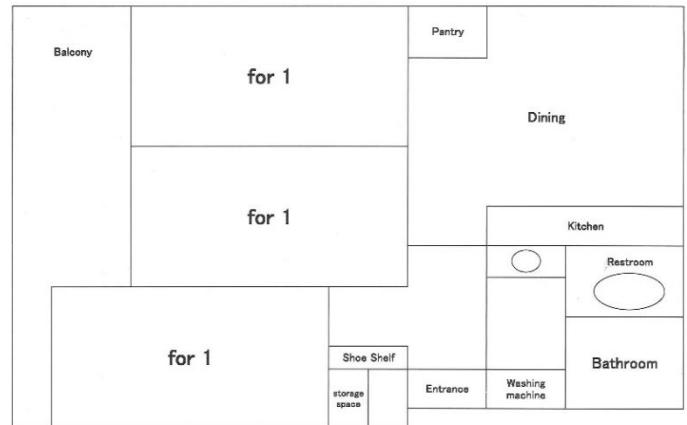
Point

- 10 min on foot to school
- Refrigerator in each room
- Renovated in 2023



Expenses

Initial Fee: ¥40,000
 Deposit: ¥20,000 (1 year)
 Rent: ¥42,000/month
 Utility Fee: Actual expense
 (Approx. ¥8,000/m)



Facilities

<Common> Dining Kitchen, Bathroom, Lavatory, Wash Basin, Microwave, Rice Cooker, Washing Machine, Vacuum Cleaner, Wi-Fi
 <Room> Bed, Bedding Set, Air Conditioner, Refrigerator, Desk and Chair



Capacity 3 people (9.29m² x 3 rooms)

Access

To school: 10 min on foot
 Nearest school: 15 min on foot to JR Saitama Shintoshin station
 《From the nearest station》
 To Shinjuku 40 min (One way ¥480)
 To Shibuya 45 min (One way ¥480)
 To Akihabara 40 min (One way ¥480)

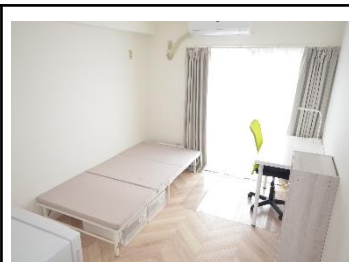


Surrounding Environment

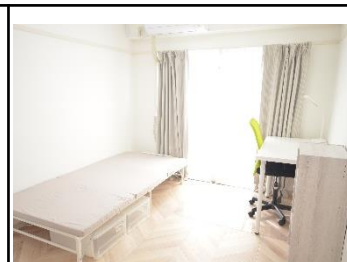
Supermarket: 13 min on foot
 Convenience store: 8 min on foot
 Clinic: 6 min on foot
 Post office: 8 min on foot



Room①



Room②



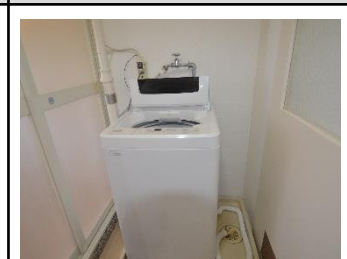
Room③



Dining room



Kitchen



Laundry